

Brighton Village

A SUBDIVISION IN THE CITY OF BROKEN ARROW, TULSA COUNTY, OKLAHOMA
 BEING A PART OF THE SW/4 OF SECTION THIRTY-SIX (36), TOWNSHIP 18
 NORTH, RANGE 14 EAST, OF THE INDIAN BASE AND MERIDIAN.

Owner/Developer
 BRIGHTON VILLAGE, LLC
 9222 SOUTH ELWOOD SUITE B
 JENKS, OK 74037
 PHONE: (918) 298-4744
 ATTN: MR. TERRY DAVIS

Engineer/Surveyor
 HRAOK, INC.
 1913 WEST TACOMA, SUITE A
 BROKEN ARROW, OKLAHOMA 74012
 PHONE: (918) 258-3737
 FAX: (918) 258-2554
 C.A.#3643 EXPIRES JUNE 30, 2009

CERTIFICATE
 I hereby certify that all real estate taxes involved in this plat have been paid as reflected by the current tax rolls. Security as required has been provided in the amount of \$ 12,183.00 per trust receipt no. 10052 to be applied to 2008 taxes. This certificate is NOT to be construed as payment of 2008 taxes in full but is given in full satisfaction of the amount of the security deposit.

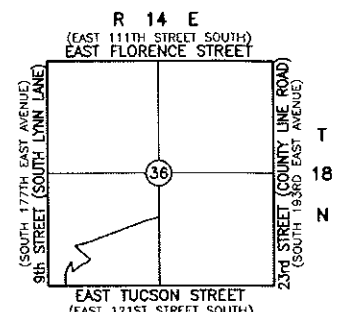
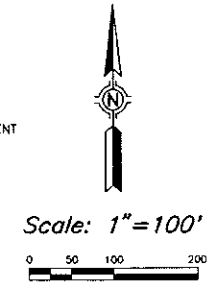
Dated 30-July-08
 Dennis Serfaty
 County Clerk
 Tulsa County, Oklahoma

PLAT No.
6223

STATE OF OKLAHOMA }
 COUNTY OF TULSA } ss
 I, EARLENE WILSON, TULSA COUNTY CLERK, AND FOR THE COUNTY AND STATE ABOVE NAMED DO HEREBY CERTIFY THAT THE FORGOING IS A TRUE AND CORRECT COPY OF A LIKE INSTRUMENT NOW ON FILE IN MY OFFICE.

DATED THE 30th DAY OF July, 2008
 EARLENE WILSON, TULSA COUNTY CLERK
 DEPUTY

- Legend**
- B/L BUILDING LINE
 - U/E UTILITY EASEMENT
 - FL/E FENCE AND LANDSCAPE EASMENT
 - LNA LIMITS OF NO ACCESS
 - TCM TRAFFIC CONTROL MEDIAN
 - STREET ADDRESS
 - 100YR FLOODPLAIN



Monumentation
 ALL CORNERS SHOWN HEREON WERE SET USING A 3/8" X 18" STEEL PIN WITH A PLASTIC CAP STAMPED "PLS 1283" AT ALL CORNERS.

Benchmark
 CHISELED 'X' SET ON HEADWALL NORTH SIDE OF EAST TUCSON STREET (E. 121ST ST. S.). APPROX. 371' EAST OF SOUTHWEST PROPERTY CORNER. ELEV. = 619.14 (NGVD 1929)

Notes
 ALL STREET RIGHT-OF-WAY SHALL BE DEDICATED AS PUBLIC STREETS BY THIS PLAT.
 ADDRESSES SHOWN ON THIS PLAT WERE ACCURATE AT THE TIME THIS PLAT WAS FILED. ADDRESSES ARE SUBJECT TO CHANGE AND SHOULD NEVER BE RELIED ON IN PLACE OF LEGAL DESCRIPTION.
 ALL WATER AND SANITARY SEWER SERVICES WILL BE SUPPLIED AND MAINTAINED BY THE CITY OF BROKEN ARROW.

Location Map
 SCALE: 1"=2000'

SUBDIVISION CONTAINS ONE HUNDRED & THIRTY-FIVE (135) LOTS IN SEVEN (7) BLOCKS AND FOUR (4) RESERVE AREAS

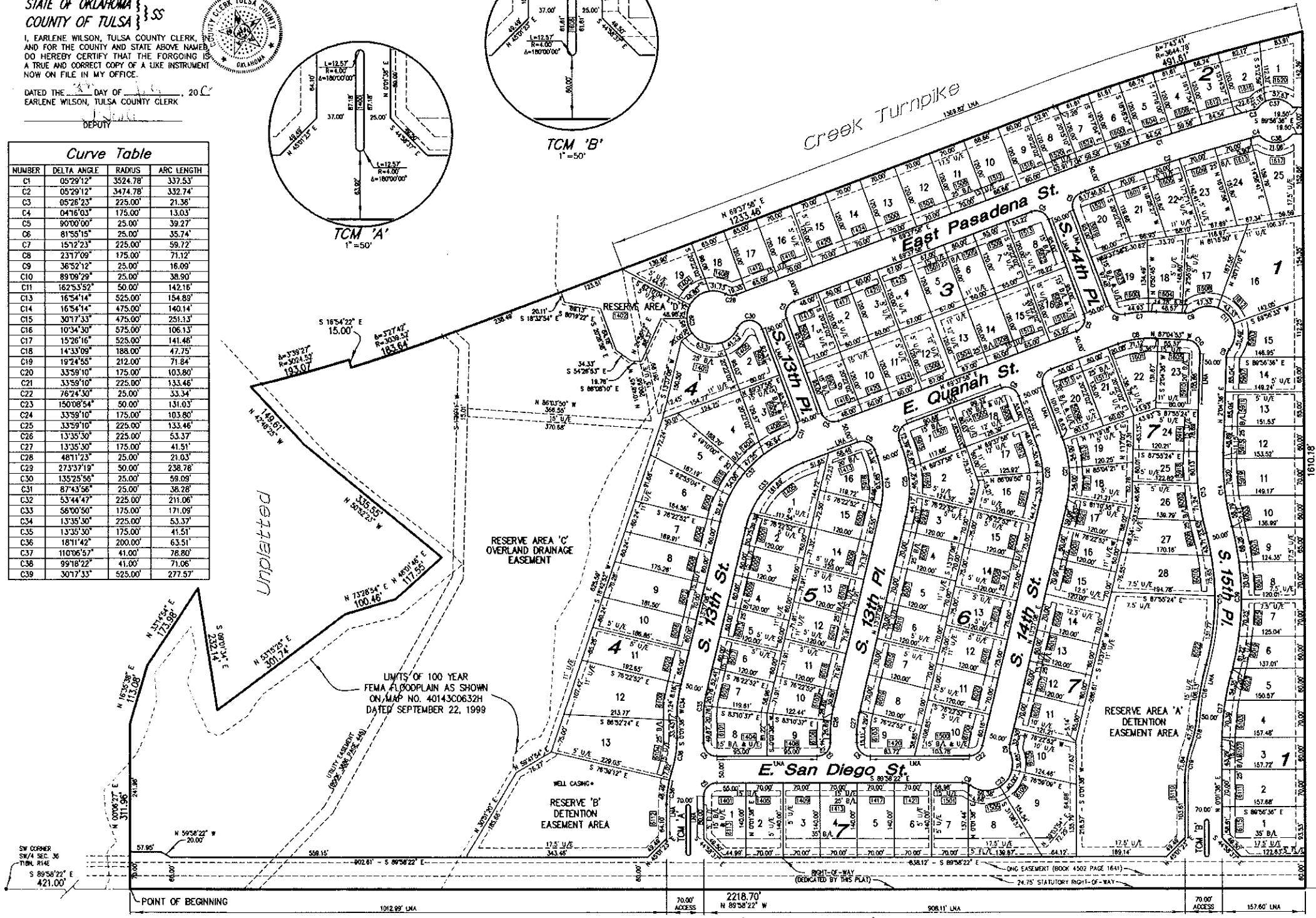
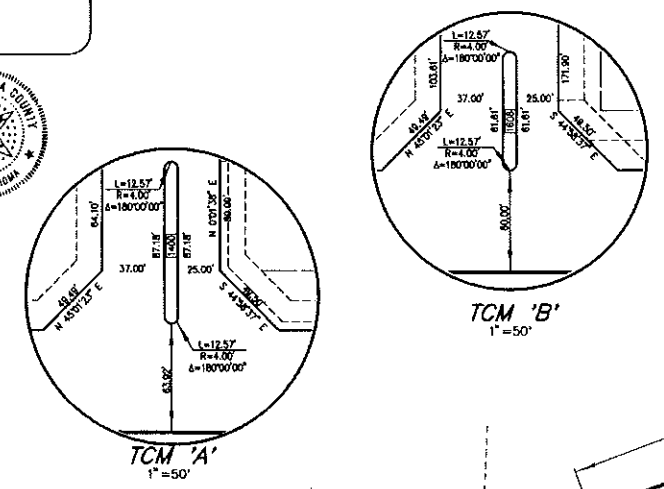
BLOCK 1 CONTAINS 25 LOTS
 BLOCK 2 CONTAINS 19 LOTS
 BLOCK 3 CONTAINS 16 LOTS
 BLOCK 4 CONTAINS 13 LOTS
 BLOCK 5 CONTAINS 16 LOTS
 BLOCK 6 CONTAINS 18 LOTS
 BLOCK 7 CONTAINS 28 LOTS

RESERVE A CONTAINS 2.68 ACRES
 RESERVE B CONTAINS 1.48 ACRES
 RESERVE C CONTAINS 14.85 ACRES
 RESERVE D CONTAINS 0.45 ACRES

SUBDIVISION CONTAINS 58.31 ACRES

Curve Table

NUMBER	DELTA ANGLE	RADIUS	ARC LENGTH
C1	05°29'12"	3524.78	337.53'
C2	05°29'12"	3474.78	332.74'
C3	05°28'23"	225.00	21.36'
C4	04°16'03"	175.00	13.03'
C5	00°00'00"	25.00	39.27'
C6	81°55'15"	25.00	35.74'
C7	15°12'23"	225.00	59.72'
C8	23°17'09"	175.00	71.12'
C9	36°52'12"	25.00	16.09'
C10	89°09'29"	25.00	38.90'
C11	162°53'52"	50.00	142.16'
C13	16°54'14"	525.00	154.89'
C14	16°54'14"	475.00	140.14'
C15	30°17'33"	475.00	251.13'
C16	10°34'30"	575.00	106.13'
C17	15°28'16"	525.00	141.46'
C18	14°33'09"	188.00	47.75'
C19	19°24'55"	212.00	71.84'
C20	33°59'10"	175.00	103.80'
C21	33°59'10"	225.00	133.46'
C22	76°24'30"	25.00	33.34'
C23	150°08'54"	50.00	131.03'
C24	33°59'10"	175.00	103.80'
C25	33°59'10"	225.00	133.46'
C26	13°35'30"	225.00	53.37'
C27	13°35'30"	175.00	41.51'
C28	48°11'23"	25.00	21.03'
C29	27°37'19"	50.00	238.78'
C30	135°25'56"	25.00	59.09'
C31	87°43'56"	25.00	38.78'
C32	53°44'47"	225.00	211.06'
C33	56°00'50"	175.00	171.09'
C34	13°35'30"	225.00	53.37'
C35	13°35'30"	175.00	41.51'
C36	18°11'42"	200.00	63.51'
C37	11°06'57"	41.00	78.80'
C38	99°18'22"	41.00	71.06'
C39	30°17'33"	525.00	277.57'



Backflow Preventer Valve Table

BLOCK	LOT	FINISHED FLOOR ELEVATION	UPSTREAM MANHOLE ELEVATION	BLOCK	LOT	FINISHED FLOOR ELEVATION	UPSTREAM MANHOLE ELEVATION	BLOCK	LOT	FINISHED FLOOR ELEVATION	UPSTREAM MANHOLE ELEVATION
Block 1	1	824.00	41 822.85	Block 3	1	833.00	4 835.40	Block 6	1	836.00	21 834.05
	2	824.00	41 822.85		2	834.00	4 835.40		2	838.00	22 834.05
	3	825.00	41 822.85		3	836.00	4 835.40		3	838.00	23 834.30
	4	825.00	40 823.97		4	837.00	4 835.40		4	839.00	23 834.30
	5	826.00	40 823.87		5	836.00	5 834.91		5	838.00	23 834.30
	6	826.00	40 823.87		6	836.00	5 834.91		6	840.00	23 834.30
	7	827.00	40 823.97		7	836.00	5 834.91		7	842.00	24 837.44
	8	828.00	38 832.54		8	835.00	5 834.91		8	843.00	24 837.44
	9	828.00	38 832.54		9	836.00	4 835.40		9	842.00	24 837.44
	10	830.00	38 832.54		10	837.00	4 835.40		10	835.00	24 837.44
	11	831.00	38 832.54		11	837.00	4 835.40		11	835.00	24 837.44
	12	833.00	38 832.54		12	836.00	4 835.40		12	834.00	24 837.44
	13	835.00	39 837.85		13	834.00	5 834.91		13	834.00	24 837.44
	14	836.00	39 837.85		14	834.00	5 834.91		14	833.00	23 834.30
	15	838.00	39 837.85		15	834.00	5 834.91		15	833.00	23 834.30
	16	842.00	7 842.88		16	834.00	5 834.91		16	833.00	23 834.30
	17	840.00	7 842.88		17	835.00	3 833.03		17	833.00	23 834.30
	18	838.00	7 842.88		18	835.00	3 833.03		18	833.00	22 834.05
	19	837.00	6 837.58		19	835.00	3 833.03		19	843.00	6 843.48
Block 2	20	836.00	6 837.58	Block 4	4	835.00	3 833.03	Block 7	2	844.00	6 843.48
	21	838.00	7 842.88		5	834.00	3 833.03		3	845.00	34 844.32
	22	840.00	7 842.88		6	834.00	14 831.43		4	843.00	34 844.32
	23	842.00	7 842.88		7	836.00	14 831.43		5	840.00	34 844.32
	24	844.00	7 842.88		8	838.00	14 831.43		6	836.00	33 838.15
	25	845.00	7 842.88		9	840.00	14 831.43		7	833.00	33 838.15
	1	845.00	13 845.78		10	842.00	15 828.00		8	831.00	33 838.15
	2	844.00	13 845.78		11	844.00	15 828.00		9	830.00	31 825.98
	3	843.00	12 842.76		12	842.00	15 828.00		10	830.00	31 825.98
	4	842.00	12 842.76		13	841.00	15 828.00		11	830.00	30 827.98
	5	840.00	12 842.76		14	840.00	17 843.41		12	830.00	30 827.98
	6	838.00	12 842.76		15	838.00	17 843.41		13	828.00	30 827.98
	7	837.00	11 838.91		16	838.00	17 843.41		14	828.00	30 827.98
	8	837.00	11 838.91		17	837.00	17 843.41		15	828.00	29 828.19
	9	837.00	11 838.91		18	837.00	17 843.41		16	828.00	29 828.19
10	837.00	11 838.91	19	836.00	18 846.15	17	830.00	29 828.19			
11	837.00	11 838.91	20	844.00	18 846.15	18	830.00	28 830.84			
12	836.00	10 837.67	21	844.00	18 846.15	19	831.00	28 830.84			
13	836.00	10 837.67	22	845.00	18 846.15	20	831.00	27 835.62			
14	835.00	10 837.67	23	845.00	18 846.15	21	834.00	27 835.62			
15	833.00	10 837.67	24	845.00	18 846.15	22	838.00	27 835.62			
16	831.00	10 837.67	25	843.00	17 843.41	23	838.00	27 835.62			
17	830.00	9 832.18	26	843.00	17 843.41	24	835.00	28 830.84			
18	829.00	9 832.18	27	841.00	17 843.41	25	833.00	28 830.84			
19	825.00	9 832.18	28	840.00	17 843.41	26	830.00	28 830.84			
			29	840.00	17 843.41	27	829.00	29 828.19			
			30	839.00	17 843.41	28	827.00	29 828.19			

APPROVED *[Signature]* BY THE CITY COUNCIL OF THE CITY OF BROKEN ARROW, OKLAHOMA
 ATTEST: CITY CLERK *[Signature]* 7.29.09

STORMWATER DETENTION ACCOMMODATIONS FOR THIS SITE ARE PROVIDED IN ACCORDANCE WITH FEE-IN-LIEU OF DETENTION DETERMINATION #00-82407-45

East Tucson Street (E. 121st St. S.)