

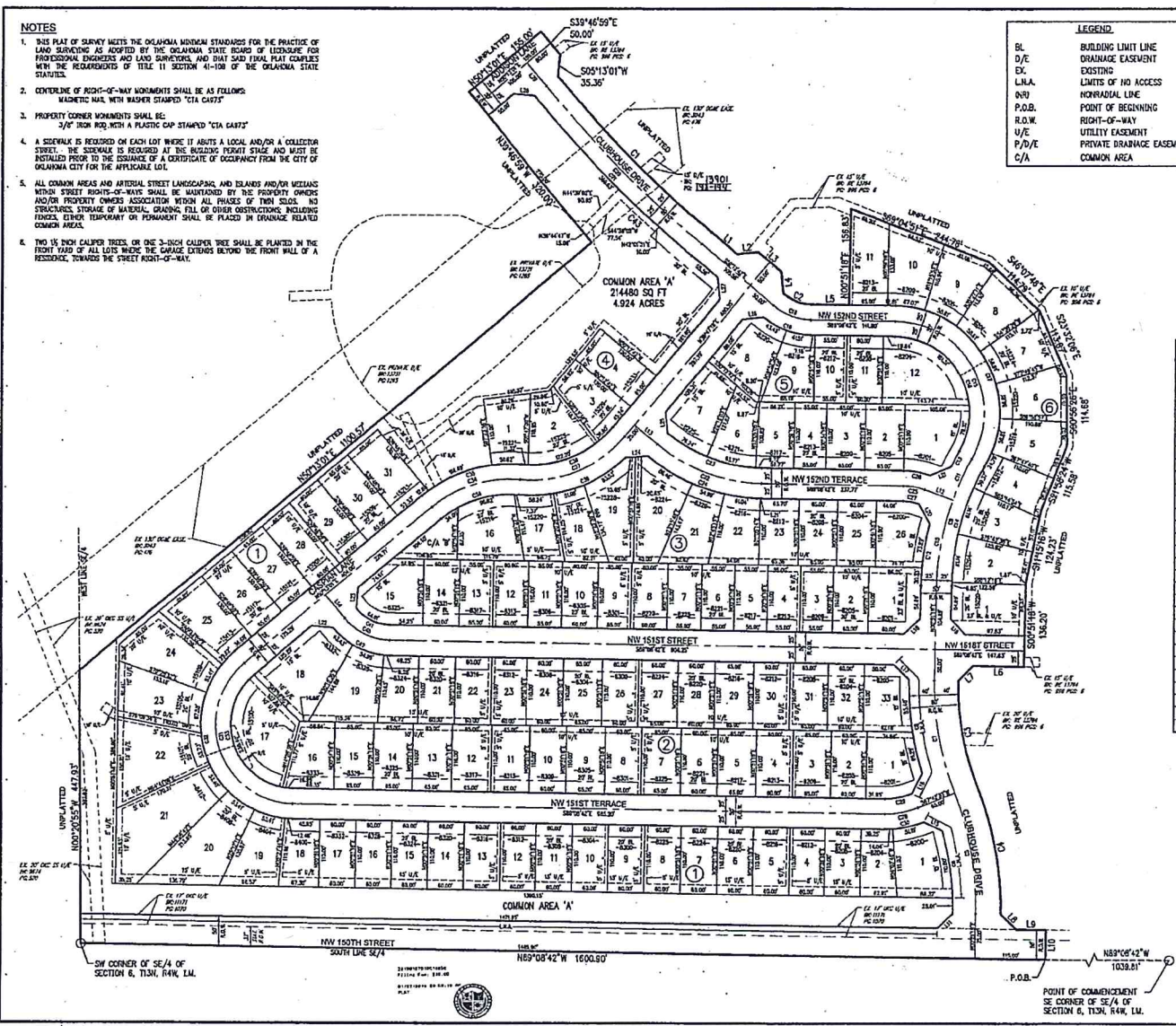
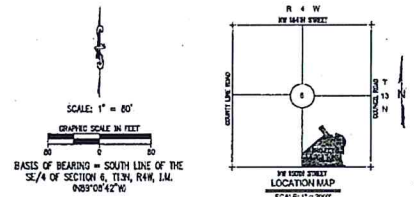
NOTES

- THIS PLAN OF SURVEY MEETS THE OKLAHOMA STANDARD FOR THE PRACTICE OF LAND SURVEYING AS ADOPTED BY THE OKLAHOMA STATE BOARD OF LICENSED PROFESSIONAL ENGINEERS AND LAND SURVEYORS, AND THAT SAID FINAL PLAT COMPLES WITH THE REQUIREMENTS OF TITLE 11, SECTION 4-108 OF THE OKLAHOMA STATE STATUTES.
- CONTRADICTORY RIGHT-OF-WAY MONUMENTS SHALL BE AS FOLLOWS:
MAGNETIC NAIL WITH WASHER STAMPED "C/A CASPT"
- PROPERTY CORNER MONUMENTS SHALL BE:
3/4" IRON ROD WITH A PLASTIC CAP STAMPED "C/A CASPT"
- A SURVEYOR IS REQUIRED ON EACH LOT WHERE IT ADJUTS A LOCAL AND/OR A COLLECTOR STREET. THE SIDEWALK IS REQUIRED AT THE BUILDING FRONT STAGE AND MUST BE INSTALLED PRIOR TO THE ISSUANCE OF A CERTIFICATE OF OCCUPANCY FROM THE CITY OF OKLAHOMA CITY FOR THE APPLICABLE LOT.
- ALL COMMON AREAS AND ARTISIAL STREET LANDSCAPING, AND TREES AND/OR WEEDS WITHIN STREET RIGHTS-OF-WAYS SHALL BE MAINTAINED BY THE PROPERTY OWNERS AND/OR PROPERTY OWNERS ASSOCIATION WITHIN ALL PHASES OF TWIN SILOS. NO STRUCTURES, STORAGE OF MATERIALS, GRADING, FILL OR OTHER OBSTRUCTIONS INCLUDING FENCES, EITHER TEMPORARY OR PERMANENT SHALL BE PLACED IN DRAINAGE RELATED COMMON AREAS.
- TWO (2) INCH CALIPER TREES OR ONE (1) 3-INCH CALIPER TREE SHALL BE PLANTED IN THE FRONT YARD OF ALL LOTS WHERE THE GARAGE EXTENDS BEYOND THE FRONT WALL OF A RESIDENCE, TOWARDS THE STREET RIGHT-OF-WAY.

**FINAL PLAT
OF
TWIN SILOS
SECTION 1**
A PART OF THE SE/4 OF SECTION 6, T13N, R4W, I.M.
OKLAHOMA CITY, OKLAHOMA COUNTY, OKLAHOMA

LEGEND

BL	BUILDING LIMIT LINE
D/E	DRAINAGE EASEMENT
EX	EXISTING
LMA	LIMITS OF NO ACCESS
NBL	NONRADIAL LINE
P.O.B.	POINT OF BEGINNING
R.O.W.	RIGHT-OF-WAY
U/E	UTILITY EASEMENT
P/D/E	PRIVATE DRAINAGE EASEMENT
C/A	COMMON AREA



LINE TABLE

LINE #	LENGTH	DIRECTION
L1	33.36'	S89°12'42"E
L2	33.36'	N89°12'42"W
L3	33.36'	S89°12'42"E
L4	33.36'	N89°12'42"W
L5	33.36'	S89°12'42"E
L6	33.36'	N89°12'42"W
L7	33.36'	S89°12'42"E
L8	33.36'	N89°12'42"W
L9	33.36'	S89°12'42"E
L10	33.36'	N89°12'42"W
L11	33.36'	S89°12'42"E
L12	33.36'	N89°12'42"W
L13	33.36'	S89°12'42"E
L14	33.36'	N89°12'42"W
L15	33.36'	S89°12'42"E
L16	33.36'	N89°12'42"W
L17	33.36'	S89°12'42"E
L18	33.36'	N89°12'42"W
L19	33.36'	S89°12'42"E
L20	33.36'	N89°12'42"W
L21	33.36'	S89°12'42"E
L22	33.36'	N89°12'42"W
L23	33.36'	S89°12'42"E
L24	33.36'	N89°12'42"W
L25	33.36'	S89°12'42"E
L26	33.36'	N89°12'42"W
L27	33.36'	S89°12'42"E
L28	33.36'	N89°12'42"W
L29	33.36'	S89°12'42"E
L30	33.36'	N89°12'42"W
L31	33.36'	S89°12'42"E
L32	33.36'	N89°12'42"W
L33	33.36'	S89°12'42"E

CURVE TABLE

CURVE #	LENGTH	RAZES	DELTA	CHORD CORRECTION	CHORD LENGTH
C1	33.36'	100.00'	89.1242°	0.0000'	33.36'
C2	33.36'	100.00'	89.1242°	0.0000'	33.36'
C3	33.36'	100.00'	89.1242°	0.0000'	33.36'
C4	33.36'	100.00'	89.1242°	0.0000'	33.36'
C5	33.36'	100.00'	89.1242°	0.0000'	33.36'
C6	33.36'	100.00'	89.1242°	0.0000'	33.36'
C7	33.36'	100.00'	89.1242°	0.0000'	33.36'
C8	33.36'	100.00'	89.1242°	0.0000'	33.36'
C9	33.36'	100.00'	89.1242°	0.0000'	33.36'
C10	33.36'	100.00'	89.1242°	0.0000'	33.36'
C11	33.36'	100.00'	89.1242°	0.0000'	33.36'
C12	33.36'	100.00'	89.1242°	0.0000'	33.36'
C13	33.36'	100.00'	89.1242°	0.0000'	33.36'
C14	33.36'	100.00'	89.1242°	0.0000'	33.36'
C15	33.36'	100.00'	89.1242°	0.0000'	33.36'
C16	33.36'	100.00'	89.1242°	0.0000'	33.36'
C17	33.36'	100.00'	89.1242°	0.0000'	33.36'
C18	33.36'	100.00'	89.1242°	0.0000'	33.36'
C19	33.36'	100.00'	89.1242°	0.0000'	33.36'
C20	33.36'	100.00'	89.1242°	0.0000'	33.36'
C21	33.36'	100.00'	89.1242°	0.0000'	33.36'
C22	33.36'	100.00'	89.1242°	0.0000'	33.36'
C23	33.36'	100.00'	89.1242°	0.0000'	33.36'
C24	33.36'	100.00'	89.1242°	0.0000'	33.36'
C25	33.36'	100.00'	89.1242°	0.0000'	33.36'
C26	33.36'	100.00'	89.1242°	0.0000'	33.36'
C27	33.36'	100.00'	89.1242°	0.0000'	33.36'
C28	33.36'	100.00'	89.1242°	0.0000'	33.36'
C29	33.36'	100.00'	89.1242°	0.0000'	33.36'
C30	33.36'	100.00'	89.1242°	0.0000'	33.36'
C31	33.36'	100.00'	89.1242°	0.0000'	33.36'
C32	33.36'	100.00'	89.1242°	0.0000'	33.36'
C33	33.36'	100.00'	89.1242°	0.0000'	33.36'
C34	33.36'	100.00'	89.1242°	0.0000'	33.36'
C35	33.36'	100.00'	89.1242°	0.0000'	33.36'
C36	33.36'	100.00'	89.1242°	0.0000'	33.36'
C37	33.36'	100.00'	89.1242°	0.0000'	33.36'
C38	33.36'	100.00'	89.1242°	0.0000'	33.36'
C39	33.36'	100.00'	89.1242°	0.0000'	33.36'
C40	33.36'	100.00'	89.1242°	0.0000'	33.36'
C41	33.36'	100.00'	89.1242°	0.0000'	33.36'
C42	33.36'	100.00'	89.1242°	0.0000'	33.36'
C43	33.36'	100.00'	89.1242°	0.0000'	33.36'
C44	33.36'	100.00'	89.1242°	0.0000'	33.36'
C45	33.36'	100.00'	89.1242°	0.0000'	33.36'
C46	33.36'	100.00'	89.1242°	0.0000'	33.36'
C47	33.36'	100.00'	89.1242°	0.0000'	33.36'
C48	33.36'	100.00'	89.1242°	0.0000'	33.36'
C49	33.36'	100.00'	89.1242°	0.0000'	33.36'
C50	33.36'	100.00'	89.1242°	0.0000'	33.36'
C51	33.36'	100.00'	89.1242°	0.0000'	33.36'
C52	33.36'	100.00'	89.1242°	0.0000'	33.36'
C53	33.36'	100.00'	89.1242°	0.0000'	33.36'
C54	33.36'	100.00'	89.1242°	0.0000'	33.36'
C55	33.36'	100.00'	89.1242°	0.0000'	33.36'
C56	33.36'	100.00'	89.1242°	0.0000'	33.36'
C57	33.36'	100.00'	89.1242°	0.0000'	33.36'
C58	33.36'	100.00'	89.1242°	0.0000'	33.36'
C59	33.36'	100.00'	89.1242°	0.0000'	33.36'
C60	33.36'	100.00'	89.1242°	0.0000'	33.36'
C61	33.36'	100.00'	89.1242°	0.0000'	33.36'
C62	33.36'	100.00'	89.1242°	0.0000'	33.36'
C63	33.36'	100.00'	89.1242°	0.0000'	33.36'
C64	33.36'	100.00'	89.1242°	0.0000'	33.36'
C65	33.36'	100.00'	89.1242°	0.0000'	33.36'
C66	33.36'	100.00'	89.1242°	0.0000'	33.36'
C67	33.36'	100.00'	89.1242°	0.0000'	33.36'
C68	33.36'	100.00'	89.1242°	0.0000'	33.36'
C69	33.36'	100.00'	89.1242°	0.0000'	33.36'
C70	33.36'	100.00'	89.1242°	0.0000'	33.36'
C71	33.36'	100.00'	89.1242°	0.0000'	33.36'
C72	33.36'	100.00'	89.1242°	0.0000'	33.36'
C73	33.36'	100.00'	89.1242°	0.0000'	33.36'
C74	33.36'	100.00'	89.1242°	0.0000'	33.36'
C75	33.36'	100.00'	89.1242°	0.0000'	33.36'
C76	33.36'	100.00'	89.1242°	0.0000'	33.36'
C77	33.36'	100.00'	89.1242°	0.0000'	33.36'
C78	33.36'	100.00'	89.1242°	0.0000'	33.36'
C79	33.36'	100.00'	89.1242°	0.0000'	33.36'
C80	33.36'	100.00'	89.1242°	0.0000'	33.36'
C81	33.36'	100.00'	89.1242°	0.0000'	33.36'
C82	33.36'	100.00'	89.1242°	0.0000'	33.36'
C83	33.36'	100.00'	89.1242°	0.0000'	33.36'
C84	33.36'	100.00'	89.1242°	0.0000'	33.36'
C85	33.36'	100.00'	89.1242°	0.0000'	33.36'
C86	33.36'	100.00'	89.1242°	0.0000'	33.36'
C87	33.36'	100.00'	89.1242°	0.0000'	33.36'
C88	33.36'	100.00'	89.1242°	0.0000'	33.36'
C89	33.36'	100.00'	89.1242°	0.0000'	33.36'
C90	33.36'	100.00'	89.1242°	0.0000'	33.36'
C91	33.36'	100.00'	89.1242°	0.0000'	33.36'
C92	33.36'	100.00'	89.1242°	0.0000'	33.36'
C93	33.36'	100.00'	89.1242°	0.0000'	33.36'
C94	33.36'	100.00'	89.1242°	0.0000'	33.36'
C95	33.36'	100.00'	89.1242°	0.0000'	33.36'
C96	33.36'	100.00'	89.1242°	0.0000'	33.36'
C97	33.36'	100.00'	89.1242°	0.0000'	33.36'
C98	33.36'	100.00'	89.1242°	0.0000'	33.36'
C99	33.36'	100.00'	89.1242°	0.0000'	33.36'
C100	33.36'	100.00'	89.1242°	0.0000'	33.36'

FINAL PLAT TO SERVE
TWIN SILOS SECTION 1

888 North Lincoln
Tulsa, Oklahoma 74107

Crafton Tull
LAND SURVEYORS

POINT OF BEGINNING
SE CORNER OF SE/4 OF SECTION 6, T13N, R4W, I.M.

DATE: 10/02/18
PROJECT NO.: 16610500
PD-2665

